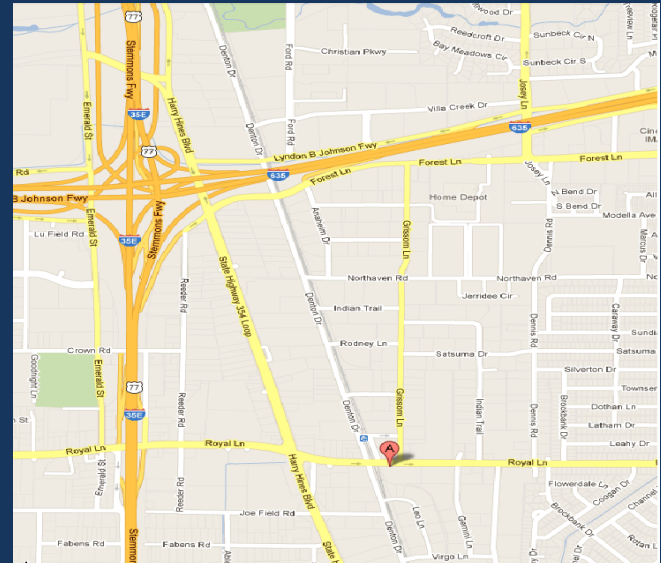


# ROYAL LANE BUSINESS CENTER

2720 Royal Lane, Suite 196 • Dallas, Texas 75229  
For Lease • Office • Showroom • Warehouse



## SUITE FOR LEASE PROFILE

Size	6,000 SF
Clear Height	16'
Loading	Rear: 1 Dock High & 1 Ramp
Suite Amenities	Prominent Retail/ Wholesale Visibility +/- 575 Showroom/ Office Area 2 Private Offices +/- 5,425 Warehouse Large Open Warehouse for Stacking Separate Warehouse & Office Entrances Multi-Tenant Complex & Ample Parking

## LOCATION HIGHLIGHTS

- ❖ High Visibility on Royal Lane
- ❖ 1 Mile from I-35E-Stemmons
- ❖ 2 Miles from 635-LBJ Freeway
- ❖ Across from New DART Rail Station
- ❖ Near Harry Hines Wholesale District



Developed & Professionally  
Leased & Managed by

**HAY & JONES INC.**

*Commercial Real Estate Services*

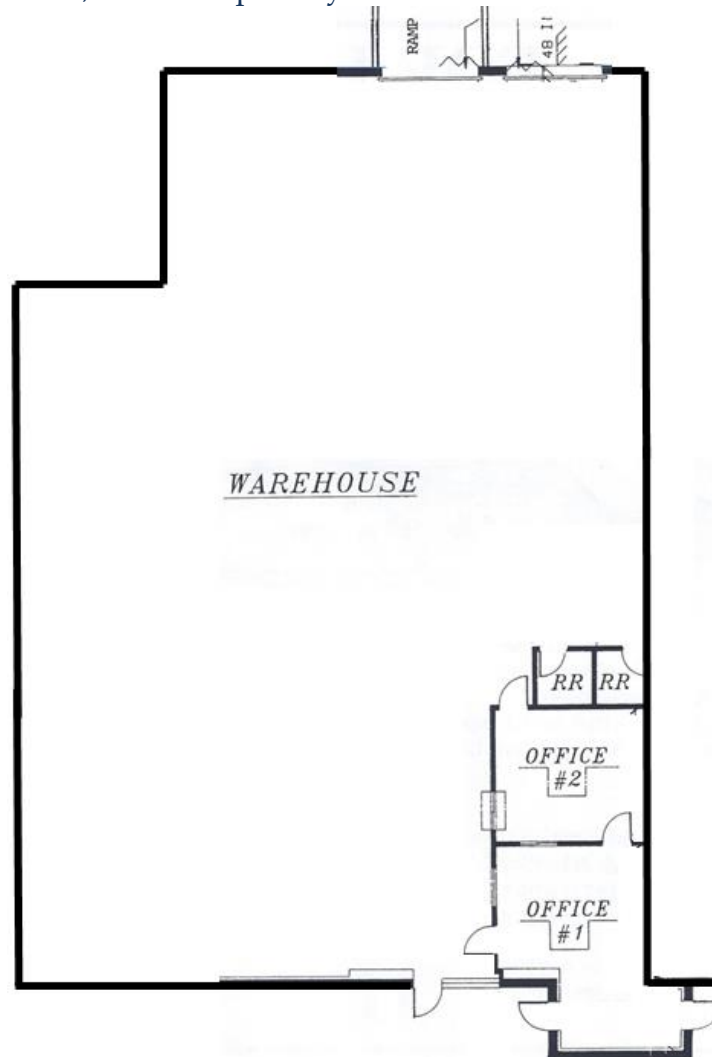
HayJones.com  
972.620.8850

All information regarding property for lease is from sources deemed reliable, but no guarantee is made as to its accuracy or completeness and you are advised to make your own analysis and verification.

# ROYAL LANE BUSINESS CENTER

2720 Royal Lane, Suite 196 • Dallas, Texas 75229

Royal Lane Center by Hay & Jones Inc. is a multi-tenant office/ showroom/ warehouse retail/wholesale property strategically located on Royal Lane at Denton Drive near the Harry Hines Wholesale District, and across from the new Royal Lane DART Rail Station. The property is unique due to its excellent frontage and visibility onto a major street with 30,000 + cars per day.



Developed & Professionally  
Leased & Managed by

**HAY & JONES INC.**

*Commercial Real Estate Services*

HayJones.com

972.620.8850

Randy@HayJones.com