

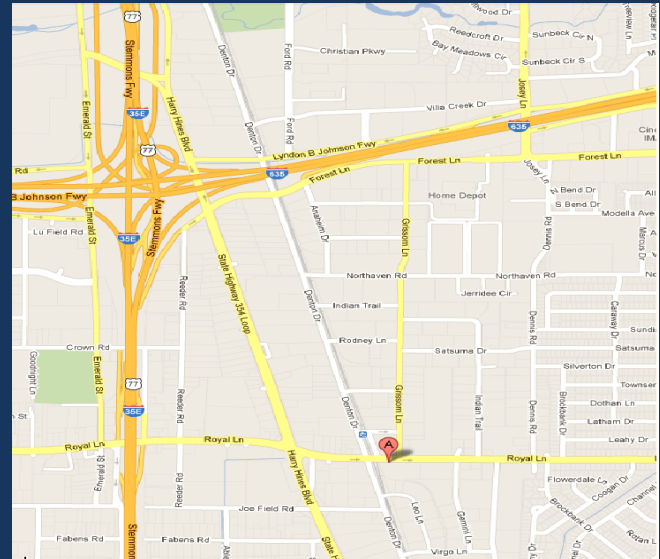
ROYAL LANE BUSINESS CENTER

2720 Royal Lane, Suite 200 • Dallas, Texas 75229
For Lease • Office • Showroom • Warehouse



SUITE FOR LEASE PROFILE

| | |
|-----------------|---|
| Size | 6,500 SF |
| Clear Height | 16' |
| Loading | Rear: 1 Dock High & 1 Ramp Side: Grade Level |
| Suite Amenities | Prominent Retail/ Wholesale Visibility +/- 2,200 Showroom/ Office Open Showroom with Glass Storefront 2 Private Offices & Large Open Area +/- 4,300 Warehouse Multi-Tenant Complex & Ample Parking |



LOCATION HIGHLIGHTS

- ❖ High Visibility on Royal Lane
- ❖ 1 Mile from I-35E-Stemmons
- ❖ 2 Miles from 635-LBJ Freeway
- ❖ Across from New DART Rail Station
- ❖ Near Harry Hines Wholesale District

Developed & Professionally
Leased & Managed by

HAY & JONES INC.

Commercial Real Estate Services

HayJones.com
972.620.8850

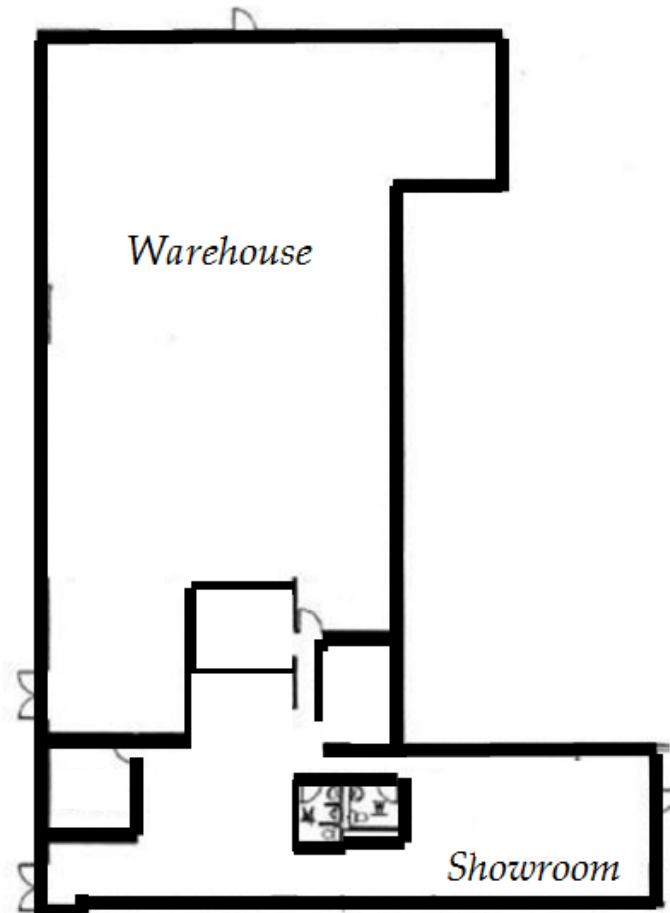


All information regarding property for lease is from sources deemed reliable, but no guarantee is made as to its accuracy or completeness and you are advised to make your own analysis and verification.

ROYAL LANE BUSINESS CENTER

2720 Royal Lane, Suite 200 • Dallas, Texas 75229

Royal Lane Center by Hay & Jones Inc. is a multi-tenant office/ showroom/ warehouse retail/wholesale property strategically located on Royal Lane at Denton Drive near the Harry Hines Wholesale District, and across from the new Royal Lane DART Rail Station. The property is unique due to its excellent frontage and visibility onto a major street with 30,000 + cars per day.



Developed & Professionally
Leased & Managed by

HAY & JONES INC.

Commercial Real Estate Services

HayJones.com

972.620.8850

Randy@HayJones.com

All information regarding property for lease is from sources deemed reliable, but no guarantee is made as to its accuracy or completeness and you are advised to make your own analysis and verification.